



## TRI-CITIES CHAPTER 1192

### NARFE NEWS

National Active and Retired Federal Employees Association  
*Advocates for Active and Former Federal Employees*

[www.NARFE1192.org](http://www.NARFE1192.org)

**January - February, Volume 2011, Issue 1**

#### **2011 Chapter 1192 Officers & Board Members**

<b>President, Don Binder</b>	509-585-1393
<b>1<sup>st</sup> Vice President, Carl Gallion</b>	509-967-9161
<b>2<sup>nd</sup> Vice President, Lorie Bennett</b>	509-531-2745
<b>Treasurer, Nancy Crosby</b>	509-735-3288
<b>Secretary, Mary Alice Binder</b>	509-585-1393
<b>Legislative, Don &amp; Mary Alice Binder</b>	509-585-1393
<b>NARFE-PAC, Don Binder</b>	509-585-1393
<b>Alzheimer's, Bill Darke</b>	509-375-7757
<b>Public Relations, Mary Alice Binder</b>	509-585-1393
<b>Sunshine, Marci Lingle</b>	509-627-6628
<b>Parliamentarian, Mable Rutt</b>	509-943-1812
<b>Hospitality, Carl Gallion</b>	509-967-9161
<b>Membership/Newsletter,</b>	
<i>Johanna Caylor</i>	509-308-6664
<b>Webmaster, Larry Williams</b>	509-783-8554
<b>Deacon, Al Rizzo</b>	509-375-0446

#### **SERVICE CENTER**

Open Tuesdays, 9:30 – 11:30 a.m.  
Federal Bldg., Richland, Room 137  
Phone: 509-373-9536

**Caller Coordinator.** Pam Griffin has agreed to fill this position. She can be reached at: 509-492-4304. Thank you, Pam!  
If you can assist Pam as a caller to let members know about the Chapter's meetings and take reservations, please contact her.



**Still needed – Service Center Coordinator.** For more information about this position, please call Chapter President Don Binder at: 509-585-1393.

#### **CHAPTER MEETINGS/EVENTS**

**Meetings:** 1<sup>st</sup> Wednesdays, except July/August  
11:30 a.m., Kennewick Red Lion, Clearwater "C"  
Lunch: \$13; reservations requested  
(Vegetarian plates available, if ordered when making a reservation with phone caller)  
Executive Board meets after Chapter meetings

**January 5** – Chapter Meeting: Paul Shelp,  
Executive Director, Dispute Resolution Center  
**(2<sup>nd</sup> call for canned/packaged food donations!)**  
**Menu: Tender Marinated London Broil**

**February 2** – Chapter Meeting: (Tentative)  
Gail Splett, Program Manager, DOE/Hanford,  
Energy Employees Occupational Illness  
**Menu: Italian Meatloaf**

#### **NOVEMBER TREASURER'S REPORT\***

Balance forward, October 31	\$ 7,478.00
November Income	\$ 825.11
November Expenditures	\$ 472.91
Dedicated funds, 18-mo. budget	\$ 1,012.00
Balance on hand, September 30	\$ 6,819.18

(\*Full reports are on the Chapter web site.)

#### **Always Good to Know**

OPM: 888-767-6738, "Retirement Info Line"

OPM: [www.opm.gov/retire/](http://www.opm.gov/retire/)

Resource Guide: *Be Prepared for Life's Events*  
(available at: [www.narfe.org](http://www.narfe.org))

Washington Federation: [www.narfewa.net](http://www.narfewa.net)  
NARFE: [www.narfe.org](http://www.narfe.org)

#### **HOSPITALITY**

For 2011 the Chapter's meetings will remain at the Kennewick Red Lion. Dates/meal menus are on the Chapter web site. With increases in health insurance and again no COLA, the Chapter Board has elected to keep the per meal cost charged to members at \$13, even though the price has gone up a dollar. The Chapter will pay the difference.  
***We hope this helps continue to encourage you to join us at our meetings.*** If you have questions, please contact me, Carl Gallion, Hospitality Chairman, at: 509-967-9161.

**Reminder** – "No shows" must pay for their meal unless they cancel their reservation not later than noon Monday prior to the Chapter meeting. To cancel, call Pam Griffin at: 509-492-4304.

## Chapter President – Don Binder

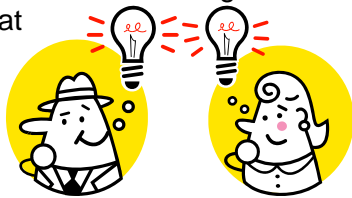
As I write **my first column** as your president, I would like to first thank Gary Hagedorn for serving as our Chapter president these last several months, ensuring all went well. Then, a BIG thank you to District V Vice President Steve Anderson who braved weather conditions from 9836 Wenatchee to join us for our December meeting and to install our officers.

So, what can you expect from me – well, first and foremost, a goal to see more of you at our monthly meetings. Not only are these good opportunities to socialize with your fellow Chapter 1192 members and guests, hear and question what the board and committees are doing on your behalf, but also opportunities to learn about things going on in the Tri-Cities and other topics of interest. As Carl Gallion noted, ***we are holding the meal costs at \$13, so yes, an added benefit for members!***

Other primary goals will be to work as a team to increase and retain Chapter membership. If you have any doubts about current and retired federal employees needing a voice in Congress, just look at recommendations from the National Commission on Fiscal Responsibility and Reform that would impact on current employees by: requiring a high 5-year average: increasing the amount withheld to pay the employees “share” toward retirement; and, increasing the cost of health benefits premiums. Then, for retirees, it would impact on COLA and health benefits premium costs. ***So, more than ever, we should be able to “sell” NARFE membership to ALL current and retired federal employees!***

Your board will hold a “brain storming” session soon to discuss what we can do on a Chapter-wide basis to get the word out. If you have ideas, please contact me, or Johanna Caylor, our Chapter membership chairman, to ensure your thoughts are on the table as we discuss these critical issues – recruiting and retaining members.

Additionally, we’ll be reaching out to staff at the local offices for our Senators Maria Cantwell and Patty Murray, and Congressman “Doc” Hastings so we can ensure NARFE issues are understood at the local level. This will help enable greater



awareness by the senators and congressmen when we work to meet with them either in the local area or at NARFE’s March National Legislative Workshop in Washington, DC.

I hope each of you had a joyous Christmas and Holiday Season, and didn’t “raise too much Cain” on New Years Eve! I look forward to seeing each of you at a Chapter meeting in the near future.

## 1<sup>st</sup> and 2<sup>nd</sup> VPs – Carl Gallion/Lorie Bennett

At the December meeting, members welcomed back Carl! His recent hip “re-surgery” and now ongoing rehab are allowing him to get out/about.

And, a special thank you to Lorie Bennett who agreed to serve as the Chapter’s new 2<sup>nd</sup> VP.

## Alzheimer’s Research Fund – William Darke

In November we had the Chapter’s annual white elephant auction. Including auction proceeds and donations, we raised \$1,110 for NARFE’s Alzheimer’s Research Fund.

The money also will help NARFE reach its new goal of raising \$10M by 2012. I would like to thank everyone who contributed, with a special thank you to Pam Griffin who assisted me in the auction. Finally, even though Alzheimer’s month is officially over, donations are most welcome anytime.



## Sunshine News – Marci Lingle

**Condolences** – the Chapter recently lost members Donald Rice and Robby Robinson. Thoughts are with their families.

**Get Well Wishes** – Sig Preston had knee replacement surgery; Larry Musen, Ofelia Gloria and Lyell Bingham ... thoughts and good wishes are with you.

**Special Announcement** – for current/former DOE employees, or anyone else, DOE Division Manager **Jim Spracklen** is retiring. A celebration of his service will be January 13, 2:00 – 4:30 p.m., Volpentest HAMMER Training Center, 2890 Horn Rapids Road, Richland. Then, an after-hour, no-host social follows at the Richland Towne Crier.

Please continue to let me know about members affected by a significant event such as an illness, loss, or an extra-special occasion.

Contact me at:  
[tcingles@clearwire.net](mailto:tcingles@clearwire.net) or  
509-627-6628.



## Legislative – Don and Mary Binder

During its final days, members of the 111<sup>th</sup> Congress considered many items of interest and significance to NARFE members, and all current and retired federal employees. This is in addition to the final vote, December 3, by members of the National Commission on Fiscal Responsibility and Reform mentioned above. Since these and other issues are currently a constantly “moving target,” we suggest you check NARFE’s web site, [www.narfe.org](http://www.narfe.org), to get the latest updates. If you do not have access to the Internet, want to discuss legislative issues important or of interest to you, feel free to contact either us at: 509-585-1393, or [don\\_binder@msn.com](mailto:don_binder@msn.com) or [mary\\_binder@msn.com](mailto:mary_binder@msn.com).

And as always, contacting our elected officials remains an important way to make your voice heard! Contact information is provided below.

### Contacting our Federal Legislators

#### The Honorable Richard (Doc) Hastings, U.S. House of Representatives

Phone: 202-225-5816; Fax: 202-225-3251  
<http://hastings.house.gov/ContactForm.aspx>  
2715 Saint Andrews Loop, Suite D  
Pasco, WA 99301  
Phone: 509-543-9396; Fax: 509-546-1972

#### The Honorable Patty Murray, U.S. Senate

Phone: 202-224-2621; Fax: 202-224-0514  
<http://murray.senate.gov/email/index.cfm>  
402 East Yakima Avenue, Suite 390  
Yakima, WA 98901  
Phone: 509-453-7462; Fax: 509-453-7731

#### The Honorable Maria Cantwell, U.S. Senate

Phone: 202-224-3411; Fax: 202-228-0514  
<http://cantwell.senate.gov/contact/index.dfm>  
825 Jadwin Avenue, Suites 204/204A  
Richland, WA 99352  
Phone: 509-946-8106; fax: 509-946-6937

Now, a few words from ...

### District V Vice President – Steve Anderson

First, a very happy, healthy and prosperous new year to you! There is no doubt both current and retired federal employees will be threatened with benefits reductions and/or increases in healthcare premiums from actions Congress will consider to solve the national budget problems. We 1030 cannot expect to be unaffected, but we need to work hard to ensure the impact is **fair** compared to the remainder of the population. Therefore, it is more important than ever for NARFE members to

respond via e-mail, telephone or fax when we learn of threats. For example, Rep. Jason Chaffetz, R-Utah, may become chairman of the House Subcommittee on the Federal Workforce. As reported in the January *NARFE* magazine, some of his staff members told federal/postal coalition representatives in November that **silence from federal and postal employees and retirees will be taken as approval for his civil service proposals** [emphasis added].

Looking ahead – consider attending our district’s April workshop. There will be more details in your next Chapter newsletter, but we are planning something new – **a combined District I and V workshop**. This would involve NARFE’s 7 Eastern Washington chapters. We’re working to find a location fairly centrally located for all 7 chapters.

### NARFE-PAC – Don Binder

Recapping from the recent elections, NARFE contributed to all U.S. Congressional races on the state’s west side and to the state’s U.S. Senate race. No candidate for the 2 House seats on the east side – Congressional Districts IV and V – requested funds.

To all who contributed during the 111<sup>th</sup> Congress, thank you for aiding NARFE in reaching out to candidates for House and Senate races throughout Washington and the other 49 states. Without its PAC, NARFE would not have the same opportunities to 1791 reach members of Congress with its legislative issues. It is **the most critical contribution you can make** to aid in retaining benefits as a current federal employee or retiree.

Soon, we will begin soliciting requests for the 112<sup>th</sup> Congress, 2011/2012. Pins for contributions of \$20 and greater will also be available shortly.

**Interested in becoming the Chapter’s new PAC coordinator?** PAC questions? Please contact me at: 509-585-1393, or [don\\_binder@msn.com](mailto:don_binder@msn.com).

### To Current Employees

***Planning to retire soon? We are hearing from HR offices that OPM is making interim annuity payments at the 60 – 65% rate. Further, it is taking OPM about 6 – 8 months to finalize retirement claims, although employees are being put into interim pay on time.***

**Plan Ahead! Ask Questions!**

National Active and Retired Federal Employees  
Johanna Caylor  
514 Stagecoach Ct  
Richland, WA 99354  
Email: [caylorx2@aol.com](mailto:caylorx2@aol.com)

Non-Profit Organization  
U.S. Postage  
PAID  
Permit No. 173  
Richland, WA

Return Service Requested



### Membership – Johanna Caylor

**Welcome:** Sharon Jackson, Margaret Novak, Gerald Phillips, Thomas Ruehle

**Reinstated:** Kathy Andrews-Smith, James Kautzky, Michael Zamorski

**Dues Withholding:** Nadine Frindrich, Robert Stewart

**Transfer Out:** Jean Schwier (SC-249)

**New Life Member:** Ofelia Gloria

**Renewals:** Lost your renewal slip and need help? Call me and I will walk you through the process.

**Remember:** The 2010-2011 WSFC Federation Membership Campaign with \$10 rebates for:

**1-Dues withholding; 2-Gift memberships; and, 3-Spouse sign up.**

**Reminder:** If you, including “snowbirds,” change your mailing/e-mail addresses, or phone number, please contact me. This is very important so we can continue to provide you Chapter information.

**Help:** NARFE not only needs new members – we need to **retain** the members we have. Help our Chapter and NARFE grow and sustain strength!

**Call me:** If you have questions, please call me. My numbers are: 509-375-0739 or 308-6664.

**Dues Withholding:** To those retired members who are delinquent at this time and to those with renewals coming up – consider “dues withholding.” Only \$3.67 will be withheld from your monthly annuity AND you will then no longer receive renewal notices! A BONUS – you send no money with your application. Call or e-mail me if you need a form.

**Hidden numbers:** There are 3 in this issue – last 4 digits of a member’s number. Contact me if you find yours; win \$5! Congratulations Cora Baldwin and Bob Lindsay who found their numbers in the November/December newsletter. Sorry, John Slaughter, yours was the third number but no call!

### Upcoming Dates to Remember:

*New Year’s Day, January 1*

*Martin Luther King, Jr. Day, January 17*

*Valentine’s Day, February 14*

*President’s Day, February 21*

