



January Meeting: Annual Chapter Food Drive. Need Non-Perishable Food!

TRI-CITIES CHAPTER 1192 NARFE NEWS

National Active and Retired Federal Employees Association
"Advocates for Current and Former Federal Employees"

NARFE: www.narfe.org Washington Federation: www.narfewa.net Tri-Cities: www.narfe1192.org

2015 Chapter 1192 Officers & Board Members

President, Don Binder	509.585.1393
1st Vice President, Lorie Bennett	509.531.2745
2nd Vice President, Larry Williams	509.783.8554
Secretary, Mary Alice Binder	509.585.1393
Treasurer, Nancy Crosby	509.735.3288
Director at Large, Steve Howes	509.851.4913
Director at Large, Pat Turner	509.586.6239
Alzheimer's, Bill Darke	509.375.7757
Legislative, Don & Mary Alice Binder	509.585.1393
Membership, Johanna Caylor	509.308.6664
NARFE-PAC, Steve Howes	509.851.4913
Newsletter, Mary Alice Binder	509.585.1393
Public Relations, Mary Alice Binder	509.585.1393
Service Center, Lorie Bennett	509.531.2745
Webmaster, Larry Williams	509.783.8554

Chapter Email: narfe1192@gmail.com

CHAPTER MEETINGS/EVENTS

Meetings: 1st Wednesdays, except July/August

11:30 a.m., Kennewick Red Lion

Lunch: \$15; reservations REQUIRED

(Vegetarian plates available, if ordered ahead)

Lunch not required to attend the meeting.

Need a ride? Contact President Don Binder.

Note: Executive Board meeting days/times vary.

January 7 – Carousel of Dreams, past, present, future, presentation by Eric Van Winkle, board chair

Menu: thin-cut pork chop w/fire-roasted apples

Food Drive: Need non-perishable items, or cash or check!

February 4 – Learn about music therapy from area music therapist, Lindsay Tucker

Menu: clam chowder in sourdough bread bowl

NOVEMBER TREASURER'S REPORT*

Balance forward, October 31	\$10,362.58
November income	\$ 1,502.63
November expenditures	\$ 2,328.66
Dedicated funds thru November 30	\$ 1,778.00
Balance on hand, November 30	\$ 7,758.55

(*Full reports are posted monthly on the Chapter web site.)

Note! 2015 chapter budget approved at December meeting. Now on chapter's website.

January – February, Volume 2015, Issue 1

Chapter President – Don Binder

Hopefully, all of you had a Merry Christmas or Happy Hanukkah, and have a happy New Year!

As we ended 2014, our chapter was most pleased to have had **47 new members** join during the year. Thus, we **now have more than 330 members**. This is the highest total we have had in several years. Thanks to all the great work done by members in encouraging friends, and former or current co-workers, to join NARFE.

In part, NARFE's mission statement is ... **"to support legislation beneficial to current and potential federal annuitants and to oppose legislation contrary to their interests. To promote the general welfare of current and potential federal annuitants by advising them with respect to their rights under retirement laws and regulations..."** We believe the key to our continued success in working with Congress is "strength in numbers." So please, continue to strongly recommend NARFE membership to those you know who are eligible. Even if they don't live in the Tri-Cities area, they can become members of our chapter, join a chapter near where they live, or join NARFE's e-chapter. In any event, having them join and retaining their membership is key to NARFE's ongoing success with regard to its mission.

Don't forget our January food drive!

Please bring either non-perishable food, or a check or cash, to the meeting for the Tri-Cities Food Bank. Several years ago, we switched our "food drive" to January as food bank cupboards tend to be bare after the holidays. If you are unable to attend the meeting and want to contribute, please let me know and we can arrange to either receive cash, check or food.



I wish all of you much good health and a most enjoyable 2015. Hopefully, we'll continue to see many familiar faces at our monthly meetings; and, hopefully, we'll also see some of you who either haven't attended or haven't done so in some time! **6372**

**A HAPPY
NEW YEAR**

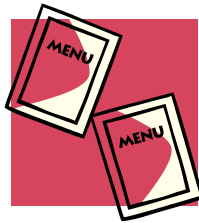
1st VP/Service Office – Lorie Bennett

New year, new resolutions? When was the last time you visited our service office in the Federal Building, Richland? Never? Been a long time? Well, if the answers are “never” or “been a long time,” how about making a visit one of your 2015 goals? The volunteers would very much enjoy your visit and talking about the service office. Remember, it is now **the only** such office in the NARFE Washington federation of chapters. We are most fortunate to have the space and the volunteers to staff the office. So, plan a visit for 2015! It is open Tuesday mornings, 9:30 to 11:30 a.m.



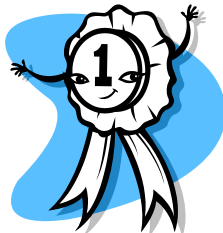
2nd VP/Webmaster – Larry Williams

New website postings – the 2015 meeting menus. Also, you'll find the projected meeting programs, along with chapter and board minutes, and chapter financial information. Find all this and more on our chapter website, www.narfe1192.org.



Director at Large – Pat Turner

Now having served my first year as a chapter director and board member, I can say it has been a very positive experience. The board is **very much** a working board. I have learned so much about all the many services NARFE provides relative to legislation, retirement support, and especially, to Alzheimer's. I remember our former chapter deacon, Al Rizzo, talking with me about this project years ago. Now, I fully appreciate that conversation. As one of the fundraising events for Alzheimer's, our chapter staffed the coat check room at the November annual Tri-Cities Wine Festival at the Three Rivers Convention Center. We took in \$380, had an enjoyable evening, and met many friends and acquaintances. We hope to do this again in 2015!



I've also learned the board works very hard to present meaningful and interesting speakers at our luncheon meetings. Therefore, I can recommend these programs to you and hope you can take advantage of hearing these speakers. **5079**

NARFE 2015 Scholarship Contest

Details in *narfe* magazines starting in February, or check the NARFE website, www.narfe.org.



District V Vice President – Nancy Crosby

In December, I attended the Christmas luncheons at the Walla Walla and Yakima chapters, and installed their 2015 officers. To note, the Tri-Cities chapter officers and directors will be serving the second of their 2-year terms.

2015 training workshops – several options are being considered. There may be a Region IX (Alaska, Idaho, Montana, Oregon and Washington) leadership training conference from noon, Saturday, May 2, to noon, Sunday, May 3, prior to the Oregon State Federation convention in Clackamas, Ore. Our Washington federation training coordinator is looking for presenters to lead some of the discussions; subjects to be determined. Another option, our District V chapters (Tri-Cities, Walla Walla and Yakima) may have a workshop with District I chapters (Columbia Basin, Colville, Spokane, Wenatchee) if the Region IX leadership training event does not work out.

The Washington State Federation of Chapters (WSFC) Executive Board held its quarterly meeting November 21 in Tacoma. At the meeting, the board approved the federation's 2015 budget. WSFC is in excellent financial shape and will be looking at “scholarship” incentives for some upcoming federation activities to encourage member participation. Also, the federation will be sending chapters \$20 per new member recruited in 2014. As of November, the federation had 171 new members.

Next federation board meeting – February 12, in Tacoma.

2016 WSFC Convention

May 15-17, 2016
Three Rivers Convention Center and
Marriott Springhill Suites, Kennewick
Mark your calendars! Volunteers needed!



2016 WSFC convention planning will begin in earnest in January! District V is hosting with the Tri-Cities chapter having the lead. MANY volunteers from throughout the district will be needed to ensure the convention is a success. Hotel construction is progressing nicely and the hotel should be open for business in late spring.

Alzheimer's Research – William Darke

November was Alzheimer's month. The chapter had its annual white elephant auction fundraiser and it was VERY successful! Between the auction, and other generous donations, we raised \$1,749. As Director-at-Large Pat Turner wrote in her article, the coat check fundraiser at the annual Tri-Cities Wine Festival raised another \$380.

So, for this program year, which began May 1, the chapter has submitted \$2,378 to the federation for Alzheimer's research, leaving a balance of \$36 in our chapter Alzheimer's account. (A balance is needed to keep the account open.)

Thank you all for your contributions to this worthy cause!

Legislative – Don and Mary Binder

President Obama has signed the Fiscal Year 2015 National Defense Authorization Act, which included establishing the Manhattan Project National Historical Park. Hanford is one of 3 sites in this new national park. It is a great legacy and one our retiring congressman, Doc Hastings, fought to make happen for many years. It is something we should proudly thank Doc for working to make a reality.

Regarding issues more closely linked to our earned benefits, the end of the 113th Congress saw the passage of and President Obama's signature on the "CRomnibus" bill to fund all but the Department of Homeland Security through the end of FY 2015 (DHS is funded until February 27.) That bill did not have any major impact on retirees or current federal employees, although it did authorize their 1% pay raise.

Now, we need to become very vigilant as the 114th Congress begins. There are many issues that can impact on both active and retired federal employees. Incoming Senate Homeland Security and Governmental Affairs Committee chairman, Senator Ron Johnson (R-WI), has spoken about these, including once again, the "Chained CPI."

We will keep a sharp eye on these issues and be Contacting our congressman-elect, Dan Newhouse, and our 2 senators. Also, please use NARFE's draft letters on GEMS, personalize them and send to all 3 on any issues our NARFE legislative staff proposes.

NARFE-PAC – Steve Howes

In the *Tri-City Herald* "Letters to the Editor," Wednesday, November 26, a reader encouraged Congressman Doc Hastings to support another \$200 million for Alzheimer's research. The writer shared that his wife has early onset Alzheimer's. No one can doubt the writer's sincerity or the anguish he most certainly feels.

No doubt, too, Alzheimer's disease is a tragic and devastating condition for an individual and their family. Since 1986, NARFE has taken on Alzheimer's research as its most important charitable effort; and its members' donations have helped make some significant gains against this dreaded disease.

However, let us not forget the real reason for NARFE's existence. Again, I encourage you to review NARFE's mission statement. It appears at the beginning of each *narfe* magazine and consists of 3 brief, clearly stated objectives. Basically, they boil down to supporting or opposing legislation that can



Contacting our Federal Legislators

The Honorable Dan Newhouse, 4th Congressional Dist.
U.S. House of Representatives
(Contact information unavailable at press time.)

The Honorable Patty Murray, U.S. Senate
Phone: 202.224.2621; Fax: 202.224.0514
<http://murray.senate.gov/email/index.cfm>
402 East Yakima Ave., Suite 390, Yakima, WA 98901
Phone: 509.453.7462; Fax: 509.453.7731

The Honorable Maria Cantwell, U.S. Senate
Phone: 202.224.3411; Fax: 202.228.0514
<http://cantwell.senate.gov/contact/index.dfm>
825 Jadwin Ave., Stes 204/204A, Richland, WA 99352
Phone: 509.946.8106; Fax: 509.946.6937

affect, either positively or negatively, federal employees or annuitants. Nowhere does the mission statement say anything regarding supporting an outside charitable effort, even though it is clearly the right thing to do.

Alzheimer's research is a very worthy cause and receives support from many varied sources. **However, protecting our hard-earned wages and benefits is our fight and ours alone.** It is up to us to fund this fight. Do not expect a groundswell of public support for protecting the rights of federal employees and retirees. The probability of someone writing a letter to the editor for any paper encouraging their senator, congressman/congresswoman to protect the hard-earned wages and benefits of federal employees and retirees is slim to none. **3734**

In 2014, Chapter 1192 members contributed about 2 times more to Alzheimer's research than NARFE-PAC, our primary means of influencing legislation important to us. So, a question: Is our associations' focus truly on its stated objectives and priorities?

NARFE-PAC Giving Level Changes 2015-2016

Basic = \$25

Bronze = \$50

Silver = \$100

Gold = \$250

Sustainer = \$10/month
minimum



Sunshine News – Mary Binder


Know someone needing "sunshine" or, a special-occasion card? Call me, or email: mary_binder@msn.com.



Return Service Requested

NARFE

Washington Federation of Chapters
Tri-Cities Chapter 1192
2802 W. 40th Ave.
Kennewick, WA 99337-2666



Suggestions Needed!
*Have ideas for a
meeting program, or a
special activity for
chapter members?*
Contact Secretary Mary Binder

Membership – Johanna Caylor

The NARFE and Washington federation recruiting incentives for 2014 are now history. They ended December 31. At newsletter press time, results were still coming in, but our chapter did pretty well. Welcome, new members! We look forward to meeting you at one of our meetings.

New members: Kelly Brazil; Steven Chalk; Douglas Chapin; Timothy Corbett; Sophia Craven; Derrick Frank; Debra Garcia; John Harris; Susan Hiller; Stacey Hofler; Mathew Holloman; Brenda House; De Layne Kruschke; Jaynee Levy; Victor Livengood; Leticia Lopez; Salvacion (Sally) Mercado; Carrie Meyer; Myrna Partida; Lori Peters; Terese Pratt; Kenneth Reeves; Glodowaldo Salinas; Liliana Sanchez; Jeff Short; Alex Teimouri; Shane Tiffany; Samuel Vega; Heidi Weber; Lawrence (Larry) Yearsley; Regina Zehm

Welcome back: James Kautzky; Cindy Oliver

Dues withholding: Ellen Le Vee

Retirees! Dues withholding saves you money! Receive a one-time, \$15 combined rebate from our WSFC and chapter for signing up. Only \$3.67/monthly taken from your annuity. Contact me, 509.308.6664, if you need information and/or the withholding form.

Snowbirds: Email and/or address changes needed! Contact Nancy Crosby or myself via email or phone.


Hidden numbers: The November/December newsletter hidden numbers belonged to: Leonard Dowd; Robert Hummell; Barbara Wessley. No calls; no winners! Find 3 new numbers “hidden” in this newsletter – **the last 4 digits of a member’s number**. Contact me, 509.308.6664, and win \$5!

Caller Coordinator – Pam Griffin

When callers leave you a message, please return the call! This helps the callers with our meeting lunch counts. Thanks! And, if you need, my contact information is:

Ph: 509.492.4304; email: pgriff1@earthlink.net.





**NARFE 2016 Calendar
Photo Contest**
Photo deadline: **February 15, 2015**
Details at: www.narfe.org
Questions: Call 703.838.7760, ext. 268,
or email: pubrel@narfe.org

Websites of Interest

federalnewsradio.com — Mike Causey column
fedsmith.com — daily TSP values, after 5 p.m.
federalsoup.com — scroll to topic of choice
federaltimes.com — finance and legal matters
govexec.com — pay and benefits by T. Flanagan
(Above courtesy of NARFE Seattle Chapter 43)
<http://claimyourcash.org> — Washington State listing
for at least \$25 unclaimed property

