



Washington State Primary, Tuesday, August 5. Remember to vote!

## TRI-CITIES CHAPTER 1192 NARFE NEWS

National Active and Retired Federal Employees Association  
"Advocates for Current and Former Federal Employees"

NARFE: [www.narfe.org](http://www.narfe.org) Washington Federation: [www.narfewa.net](http://www.narfewa.net) Tri-Cities: [www.narfe1192.org](http://www.narfe1192.org)

### 2014 Chapter 1192 Officers & Board Members

<b>President,</b> Don Binder	509.585.1393
<b>1<sup>st</sup> Vice President,</b> Lorie Bennett	509.531.2745
<b>2<sup>nd</sup> Vice President,</b> Larry Williams	509.783.8554
<b>Secretary,</b> Mary Alice Binder	509.585.1393
<b>Treasurer,</b> Nancy Crosby	509.735.3288
<b>Director at Large,</b> Steve Howes	509.851.4913
<b>Director at Large,</b> Pat Turner	509.586.6239
<b>Alzheimer's,</b> Bill Darke	509.375.7757
<b>Hospitality,</b> Carl Gallion	509.539.9179
<b>Legislative,</b> Don & Mary Alice Binder	509.585.1393
<b>Membership,</b> Johanna Caylor	509.308.6664
<b>Newsletter,</b> Mary Alice Binder	509.585.1393
<b>NARFE-PAC,</b> Steve Howes	509.851.4913
<b>Parliamentarian,</b> Mable Rutt	509.943.1812
<b>Public Relations,</b> Mary Alice Binder	509.585.1393
<b>Service Center,</b> Lorie Bennett	509.531.2745
<b>Webmaster,</b> Larry Williams	509.783.8554

**Chapter Email:** [narfe1192@gmail.com](mailto:narfe1192@gmail.com)

### CHAPTER MEETINGS/EVENTS

**Meetings:** 1<sup>st</sup> Wednesdays, except July/August

11:30 a.m., Kennewick Red Lion, Ballroom D

Lunch: \$15; reservations **REQUIRED**

**(Vegetarian plates available, if ordered ahead)**

Lunch not required to attend the meeting.

Need a ride? Contact President Don Binder!

*Note: Executive Board meeting days/times vary.*

**September 3** – Tim Coleman, elder law attorney: targeted information for seniors and their families

**(Note: also, brief NARFE convention recap)**

**Menu: cheddar chive chicken w/wild rice**

**October 1** – (Tentative) preparing for emergencies and area notification procedures and/or the two 4th Congressional District candidates

**Menu: Swedish meatballs over pasta**

### JUNE TREASURER'S REPORT\*

Balance forward, May 31	\$ 9,967.12
June income	\$ 823.76
June expenditures	\$ 400.00
Dedicated funds thru June 30	\$ 1,686.00
Balance on hand, May 31	\$ 8,704.88

(\*Full reports are posted monthly on the Chapter web site.)

### July – August, Volume 2014, Issue 4

#### **Chapter President – Don Binder**

Being in the Mid-Columbia is a GREAT place to be, and I, for one, am grateful to be here. Enjoy this summer weather, the flowers, trees, and the wonderful fruits and vegetables. Before we know it, harvest time will be here.

While our next general membership meeting is not until September 3, your chapter board is working issues, in particular, proposed changes to NARFE's structure. As I previously wrote, NARFE's National Executive Board (NEB) took several actions based on the FON – *Future of NARFE* report. (See Director-at-Large Steve Howes' article, page 3.) But, between actions your chapter leadership has taken, coupled with those at the federation and regional levels, and along with others around the country, the NEB has stepped back on actions and proposals delegates were to vote on at the 2014 NARFE convention, August 24-28, Orlando, Fla.



At press time, we know the NEB reversed its decision to reduce NARFE from 10 to 5 regions, which would have been effective November 1, for the next 2 years. As a result, and most importantly for us, our longstanding Region IX VP, Lanny Ross, has agreed to run for another 2-year term. For those of us who know and work with him, we are ecstatic!

The NEB has also agreed to drop bylaws resolutions that would: make current mandatory chapter membership optional; open membership to all who support the NARFE mission vs. only those entitled to a federal annuity; and, open membership at a reduced rate up to age 26.

Also at press time, at the convention delegates will still be voting on a general resolution to approve the FON

*(Continued on page 2)*

(Continued from page 1)

concept and move forward with the necessary in-depth strategic study and planning, including developing real timelines and milestones. They'll also be voting on one bylaw change that would reduce the number of national officers from 4 to 2, thus eliminating the VP and secretary positions.

Before the convention, the resolutions and bylaws committees will review other proposed resolutions and bylaws changes from chapters and federations, and will provide their recommendations to the delegates at the convention regarding each. The proposed changes are on NARFE's website and in a booklet sent to all chapters.

We are having a special chapter board meeting **August 1** to obtain a consensus for casting our 6 votes at the convention. While we believe change is needed to help ensure NARFE's future, we also want to ensure we have the right "way ahead."



So, stay tuned to what happens in Orlando. Besides what NARFE will have on its website, we'll be providing information each day for posting on our chapter website and a full report at our September meeting. If you have any thoughts regarding any of these issues, feel free to provide your thoughts to any board member. 9040

### 1st VP/Service Office – Lorie Bennett

According to the [CMS.gov](http://CMS.gov) website for the Centers for Medicare & Medicaid Services, the Physician Payments Sunshine Act is a national resource for beneficiaries, consumers and providers to better understand relationships between physicians, teaching hospitals and industry.



Collaboration ... can contribute to the design and delivery of life-saving drugs and devices. However, while some collaboration is beneficial, payments from manufacturers to physicians and teaching hospitals can also introduce conflicts of interests.

Continuing, "Open Payments" is a national disclosure program promoting transparency by publishing the financial relationships between the medical industry and

healthcare providers (physicians and hospitals) on a publicly accessible CMS website to be available no later than September 30. It will be organized and designed to increase access to and knowledge about these relationships and to provide information to



enable consumers to make informed decisions. Also from [CMS.gov](http://CMS.gov), a doctor may order observation services to help decide whether you need to be admitted to the hospital as an inpatient or can be discharged. During the time you're getting observation services in the hospital, you're considered an outpatient and cannot count this time toward the 3-day inpatient hospital stay needed for Medicare to cover your skilled nursing facility stay, should you need that.



Currently, 2 bills have been proposed in Congress to fix this "glitch" – H.R. 117 and S. 569, Improving Access to Medicare Coverage Act of 2013. Meanwhile, ensure you find out if you're an inpatient or outpatient.

Finally, from the Service Office volunteer staff – Nancy Crosby, Mary Goldie, Nancy Schreckhise, Dorothy Smith and Ruby Ulseth – have a wonderful summer! The office will remain on its normal schedule. See page 6.



**Senior Life Show, Three Rivers Convention Center, June 12. Tri-Cities Chapter 1192 was there! Members Lorie Bennett, Nancy Crosby and Barbara Fedoriga handed out NARFE information, signed up 9 potential members and will be making follow-up contacts. Two names will be drawn for free memberships; others will be asked to attend a chapter meeting as our guest. Great work, Nancy, Lorie and Barbara! Thank you.**

### 2nd VP/Webmaster – Larry Williams

Watch for **NARFE convention updates** on the NARFE and our chapter websites: [www.narfe.org](http://www.narfe.org) and [www.narfe1192.org](http://www.narfe1192.org). And remember, both websites have other useful NARFE and chapter information.



## Director at Large – Steve Howes

I am not sure how many of you have been following the Future of NARFE (FON) effort that has been set in motion at the national level; but I think it is something you should pay close attention to. If implemented, FON recommendations, as written, could have significant impacts on NARFE as we know it.

The NARFE National Executive Board (NEB) initiated the FON study last summer as a response to our organization's declining membership and resulting reduced revenue. The NEB recognized that given the current situation, NARFE is unsustainable and its core mission in jeopardy. A special committee was chartered in July 2013 to develop a course of action. Its findings and recommendations were presented to the NEB in February.



Along with other members of the Chapter 1192 Executive Board, I was asked by President Binder to review the FON committee's report and recommendations, and provide him feedback. While I applaud the committee's effort, the one omission that made evaluating the recommendations difficult was the lack of any sort of strategic plan containing goals and quantifiable objectives. That is, there is neither a clear statement of what the recommendations are trying to achieve nor is there a standard by which to measure success or whether a change in direction is needed.

Apparently, the NEB has recognized the need for a strategic planning effort in determining NARFE's future. The June *narfe*, page 43, contains a brief article describing how the FON report and recommendations will move forward and what will occur at the August NARFE national convention. I am encouraged to read, "This will be done through strategic planning, with stakeholder participation, to decide the best organization for the future of the Association."

So, what does this mean for you? Since you are a stakeholder and have a vested interest in seeing NARFE remain a viable organization, you must be informed and take an active role in the strategic planning process. Go to the NARFE website, [www.narfe.org](http://www.narfe.org), and then to the section dealing with "Future of NARFE." It contains a number of documents, including the FON report and recommendations. Please read them and form

your own  
Discuss your  
our chapter  
attending the  
national  
If you do not  
you cannot complain too vehemently if you do not like the end results.

**"If you do not get involved, you cannot complain too vehemently if you do not like the end result."**

opinions.  
views with  
delegates  
August  
convention.  
get involved,

### Chapter 1192 National Convention Attendees

**Don Binder**  
**Johanna Caylor**

**Mary Binder**  
**Nancy Crosby**

**Sigrid Preston**

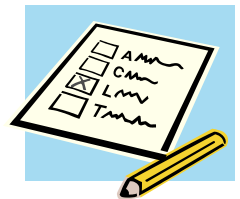
*Current as of June 30*

### District V Vice President – Nancy Crosby

All District V chapters – Tri-Cities, Yakima and Walla Walla – had representation at the May Washington State Federation of Chapters (WSFC) convention in Silverdale, Wash. Tri-Cities Chapter 1192 President Don Binder was elected to the WSFC vice president position, but will also continue with his duties as the WSFC and Region IX NARFE-PAC chairman. I was elected to serve another 2-year term as the District V DVP. Thanks for your vote of confidence. And, the chapter received \$200 for the largest dues withholdings increase in the WSFC!

There was a lot of discussion at the convention on the FON; and as many of you now know, the NARFE National Executive Board (NEB) reversed its decision to reduce the regional vice presidents (RVPs) from 10 to 5 until 2016. We are fortunate that our Region IX VP, Lanny Ross, has agreed to run for another 2-year term.

There will still be many issues to discuss and vote on at the August national convention. I will carry the proxy votes for Walla Walla Chapter 237 and Yakima Chapter 238.



The contracts with the Three Rivers Convention Center and the Springhill Suites Hotel in Kennewick have been signed for the WSFC 2016 convention! District V will be hosting this convention. Volunteers will be needed!

At the May WSFC convention caucus, the District V consensus was to hold a district training session and 2016 convention planning meeting next spring. Details will be at future chapter meetings and in chapter newsletters.



I will be visiting all the District V chapters in September to give a report on the national convention. 8808

**PROTECT America's Heartbeat Toolkit!**  
**Updated/Expanded! Go to: [www.narfe.org](http://www.narfe.org).**



## Legislative – Don and Mary Binder

When we last wrote, legislative issues confronting us did not seem to have a serious chance of passing one let alone both Houses of Congress. Well, that is still accurate.



For some things, that is good. Think the Postal Reform Act bill under consideration. It is basically “DOA.” While new bills have been introduced, they also seem to have very little chance of passing even one House of Congress.

Next, 2 bills NARFE strongly supports. The Federal Employee Combat Zone Tax Parity Act (H.R. 4621) was introduced by Rep. Rob Wittman (R-VA). It would ensure federal employees serving in designated combat zones get the same tax exemptions as military members. Having this legislation re-introduced for the first time since 2007 is a NARFE success, and it is also working to get a bill introduced and moving in the Senate. An article on the bill’s introduction is in the July *narfe*, pages 6-7. When NARFE advises via GEMS there is a “letter” to use, we all should let our Rep. Doc Hastings know we want his vote on this issue.



Senator Brian Schatz (D-HI), introduced the FAIR Act (S. 2397), a companion bill to H.R. 4306. The “Federal Adjustment of Income Tax Rates” bill would provide a 3.3% pay increase for federal employees. A letter on the NARFE Legislative Action Center is available for both the House and Senate bills ([www.narfe.org](http://www.narfe.org)). While it does not have a strong chance of passing, we should still put our individual weight behind it by writing Senators Maria Cantwell and Patty Murray asking for their support. Remember the 3-year pay freeze? Well, this would aid a little in “catching up.”

Being an election year AND with the budget act passed last year that includes FY 2015, we do not expect much in the way of critical issues during the remainder of 2014; but, we’ll watch for anything we believe could impact our members – both current and retired. 5742

So, stay tuned, stay informed and stay alert! Write or call our senators and member of Congress. Continue to watch for GEMS updates, check NARFE’s website, or call or email either of us: [don\\_binder@msn.com](mailto:don_binder@msn.com); [mary\\_binder@msn.com](mailto:mary_binder@msn.com).

## NARFE-PAC – Steve Howes

The run up to the 2014 mid-term elections is in earnest. Many primary elections have already taken place; Washington’s will be August 5. It is the focus of much attention as a number of candidates are competing for Rep. Doc Hastings seat in the 4<sup>th</sup> Congressional District. At the federal level, there could be a shift in the balance of power in Congress.

## Contacting our Federal Legislators

### The Honorable Richard (Doc) Hastings, U.S. House of Representatives

Phone: 202.225.5816; Fax: 202.225.3251  
<http://hastings.house.gov/ContactForm.aspx>  
2715 Saint Andrews Loop, Suite D, Pasco, WA 99301  
Phone: 509.543.9396; Fax: 509.546.1972

### The Honorable Patty Murray, U.S. Senate

Phone: 202.224.2621; Fax: 202.224.0514  
<http://murray.senate.gov/email/index.cfm>  
402 East Yakima Ave., Suite 390, Yakima, WA 98901  
Phone: 509.453.7462; Fax: 509.453.7731

### The Honorable Maria Cantwell, U.S. Senate

Phone: 202.224.3411; Fax: 202.228.0514  
<http://cantwell.senate.gov/contact/index.dfm>  
825 Jadwin Ave., Stes 204/204A, Richland, WA 99352  
Phone: 509.946.8106; Fax: 509.946.6937

So, as you can see, there is much political activity going on around the country that could potentially affect you as a current federal employee or retiree. NARFE-PAC contributions are a means by which you can be involved in the political process. NARFE-PAC contributes funds to campaigns of candidates and incumbents supportive of issues significant for past and present federal employees. In a way, they allow you to have a voice in not only local elections but also in races across the country that could impact you personally.



However, simply writing a check or donating cash to NARFE-PAC is not your only part in the process. After elections it is up to you to stay informed. NARFE monitors the voting records of members of Congress and shares that information with you through its website and magazine. Pay attention to the progress of pending legislation important to federal employees and retirees through NARFE’s “bill tracker.” Contact your elected representatives and make your opinions known.

Remember, elections occur every 2 years. For our PAC to remain an effective political tool, continuing contributions are needed. If you wish to make a contribution, you can either leave it with me at the next chapter meeting, or use the form, page 6, or in the monthly *narfe* (July, page 9), and send it directly to NARFE-PAC.

You may be interested to know that during the period January 1, 2013 through March 31, 2014, NARFE-PAC contributions nationally totaled \$531,143. When compared with the contributions we hear about in the media being made by other PACs to election campaigns, this may seem insignificant. However when you consider these financial contributions in combination with the work being done by NARFE’s legislative staff and your votes, we can still make a difference!



## Alzheimer's Research – William Darke

According to the Alzheimer's Association, in 2010 Alzheimer's was the third leading cause of death in Washington State, and our state had the fourth highest Alzheimer's death rate in America. More than 5 million Americans are now living with this disease, and it is estimated that as many as 16 million will have the disease by 2050.

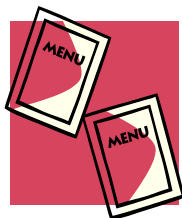
At our May Washington State Federation of Chapters convention, our Tri-Cities Chapter 1192 received a "Citation for Distinguished Service" in recognition of our outstanding contributions to the NARFE Alzheimer's Research Program. Thank you for your generosity in trying to defeat this terrible disease. (Donation form, page 6.)

alzheimer's  association

## Hospitality Chairman – Carl Gallion

Have you enjoyed the monthly lunches this year? Yes? No? Do you have ideas or suggestions for next year's menus?

While fall may seem too far out to think about, it will be here before we know it and then, again time for me to work with the Red Lion Hotel catering manager to develop a menu for our 2015 meetings. So, your thoughts are most welcome! They definitely help me in my efforts with the hotel. Please feel free to call, or email me: [cbgallion@aol.com](mailto:cbgallion@aol.com). Thank you!



## Caller Coordinator – Pam Griffin

**Reminder!** For the September chapter meeting, our callers will be making their annual calls to ALL members to update our master calling list information. We want to ensure we have correct contact information and review whether or not a member wants to remain on the "do-not-call list" for monthly meetings.



So, if you miss the call and the caller leaves you a message, please return the call. Besides verifying the contact information in September, the callers will also need meeting lunch counts. Thanks!

Last but not least, if you have time to make a few calls during our meeting season, September to June, please let me know. The more callers we have, the less time each needs to spend making calls.

[Ph: 509.492.4304; email: [pgriffin1@earthlink.net](mailto:pgriffin1@earthlink.net)]

## Membership – Johanna Caylor

**AFEs:** We hope our current federal employee members who received a 6-month free NARFE membership last fall will RENEW their memberships in July! Questions? Please give me a call.

**Welcome Back:** Chris Emmons; Jeanne Smith

**Dues Withholding:** Nancy Glaesmann; Dolores Rizzo

**TRANSFER IN:** Ed Hecker

**TRANSFER OUT:** Mavis Hafer and Julianna Norman to NARFE E-Chapter 2363

**RETIREES!** Newer and older retirees – please consider dues withholding and **SAVE**. Dues withholding is the way to go PLUS you will receive a one-time \$15 combined rebate from our Washington State Federation of Chapters and our Tri-Cities Chapter 1192. Contact me if you need information and/or the withholding form. You send NO MONEY with the application; then, within 6-9 weeks, OPM will notify you \$3.67/monthly will be taken from your annuity. No more renewal notices. Painless!

**Hidden Numbers:** The May/June newsletter hidden numbers belonged to: Cliff Ashley, Donald Farmer and Nancy Glaesmann. No calls, no winners! Find 3 new numbers "hidden" in both the printed and electronic newsletter – **the last 4 digits of a member's number**. Contact me and win \$5!



**FEHBP Providers:** July 9: Federal Bldg., Richland, 12-2 p.m.; Stevens Center, Richland, 3-4 p.m. Look for more details on our chapter website, [www.narfe1192.org](http://www.narfe1192.org).

Having members email addresses helps the chapter save money. **To note, they are only used for NARFE chapter business. They are NEVER sold or given to any other organization or individuals.** Please notify Nancy Crosby at: [ncrosby2b@charter.net](mailto:ncrosby2b@charter.net).

**Email addresses help the chapter save money!  
Do we have yours?**

Johanna contact information: text, 308.6664; landline, 375.0739; email, [caylorx2@aol.com](mailto:caylorx2@aol.com).

## ANOTHER REMINDER!

### Opt Out of NARFE Calendar & Notecards

Send your name and membership number, or name and mailing address, to: [pr@narfe.org](mailto:pr@narfe.org). Specify what you do not want – calendar, holiday notecards, spring notecards. Contributions still welcome anytime!





## Return Service Requested

### NARFE

Washington Federation of Chapters  
Tri-Cities Chapter 1192  
2802 W. 40th Ave.  
Kennewick, WA 99337-2666

### **NARFE Convention Reminder!** *August 24-28, Orlando, Florida*

NARFE will provide daily summary information about the convention, including election results, on its website, [www.narfe.org](http://www.narfe.org).  
Also check our chapter website, [www.narfe1192.org](http://www.narfe1192.org).

### Sunshine News – Mary Binder

**Condolences to:** the families of members Sandra Smith and Dan Zachary.

**Get-well cards/thinking-of-you cards to:** Paul Dunigan, Judy Hames and Marci Lingle.

**Please let me know about:** those needing some “sunshine;” or, even a card for a special occasion! Call, or email me: [mary\\_binder@msn.com](mailto:mary_binder@msn.com).



### **Support Alzheimer's Research Fund**

Enclosed is my NARFE Alzheimer's Research contribution of \$\_\_\_\_\_

Name \_\_\_\_\_,

Chapter 1192

Address \_\_\_\_\_

City \_\_\_\_\_

State \_\_\_\_\_ ZIP \_\_\_\_\_

Your charitable contribution is tax deductible to the extent allowed by law. You will receive a receipt from the Alzheimer's Association for your contribution.

Make your check payable to:  
**“NARFE – Alzheimer's Research.”**

**Mail to:** William Darke, NARFE Chapter 1192 Alzheimer's Chairman, 210 Somerset Street, Richland, WA 99354-1964

### **REMINDERS!**

#### **Chapter 1192 Service Office**

Open Tuesdays, 9:30 – 11:30 a.m.  
Federal Bldg., Room 137, Richland  
Phone: 509.373.9536

**Coordinator: 1st VP Lorie Bennett,**  
Email: [loriebennett4310@gmail.com](mailto:loriebennett4310@gmail.com)

**NARFE on Twitter!** Follow at: @narfehq

**Facebook:** Log onto Facebook, go to “NARFE National Headquarters,” then “Like”

**NARFE Toll-Free Number:** 800.627.3994

**Toll-Free Legislative Hotline:** 877.217.8234

### **NARFE-PAC Contribution Form**

Enclosed is my NARFE-PAC contribution: \$\_\_\_\_\_

(Note: Federal law requires political committees to report the name, mailing address, occupation and name of employer for each individual whose contributions aggregate in excess of \$200 in a calendar year.)

\_\_\_ Check (Enclose) \_\_\_ Credit Card

Card Type: \_\_\_ MasterCard \_\_\_ VISA \_\_\_ Discover \_\_\_ AMEX

Card #: \_\_\_\_\_

Expiration Date: \_\_\_\_\_

Name on card (print): \_\_\_\_\_

Signature: \_\_\_\_\_

Mr. Mrs. Miss Ms. (please circle)

Name: \_\_\_\_\_

Address: \_\_\_\_\_

NARFE Membership #: \_\_\_\_\_

**For my contribution of \$20/more, please send a NARFE-PAC pin:**

Please check \_\_\_ Yes or \_\_\_ No

**Mail to: NARFE, Budget & Finance**

**606 N. Washington Street, Alexandria VA 22314**