



NEW! www.ProtectAmericasHeartbeat.org

TRI-CITIES CHAPTER 1192 NARFE NEWS

National Active and Retired Federal Employees Association
"Advocates for Active and Former Federal Employees"

NARFE: www.narfe.org Washington Federation: www.narfewa.net Tri-Cities: www.narfe1192.org

May – June, Volume 2011, Issue 3

2011 Chapter 1192 Officers & Board Members

President, Don Binder	509-585-1393
1st Vice President, Carl Gallion	509-539-9179
2nd Vice President, Lorie Bennett	509-531-2745
Secretary, Mary Alice Binder	509-585-1393
Treasurer, Nancy Crosby	509-735-3288
Alzheimer's, Bill Darke	509-375-7757
Hospitality, Carl Gallion	509-539-9179
Legislative, Don & Mary Alice Binder	509-585-1393
Membership/Newsletter, Johanna Caylor	509-308-6664
NARFE-PAC, Carl Gallion	509-539-9179
Parliamentarian, Mable Rutt	509-943-1812
Public Relations, Mary Alice Binder	509-585-1393
Service Center, Lorie Bennett	509-531-2745
Sunshine, Marci Lingle	509-627-6628
Webmaster, Larry Williams	509-783-8554
Chapter E-mail: narfe1192@gmail.com	

CHAPTER MEETINGS/EVENTS

Meetings: 1st Wednesdays, except July/August
11:30 a.m., Kennewick Red Lion, Clearwater "C"
Lunch: \$13; reservations requested
(Vegetarian plates available, if ordered ahead)
Note: Executive Board meeting days/times vary

May 4 – Chapter Meeting: Updates on –
Umatilla Chemical Depot/Disposal Facility
Menu: Chicken Fried Steak

June 1 – Chapter Meeting: Chapter attendees
report on the Federation's annual convention
Menu: 3-piece Fish & Chips

No Chapter meetings in July/August.

MARCH TREASURER'S REPORT*

Balance forward, February 28	\$ 8,114.82
March Income	\$ 592.26
March Expenditures	\$ 405.81
Dedicated funds	\$ 2,832.78
Balance on hand, March 31	\$ 4,630.49
(*Full reports are on the Chapter web site.)	

SERVICE CENTER

Open Tuesdays, 9:30 – 11:30 a.m.
Federal Bldg., Richland, Room 137
Phone: 509-373-9536

Service Center Coordinator: 2nd VP Lorie Bennett

Service Center Update. Reference material has been updated; stop by, see what resources are available. **Our chapter is an exception** – it has a Service Office; so, if you haven't stopped by to see what it has to offer, consider a visit soon.

Caller Coordinator. Have a spare few minutes each month to make a few calls to fellow members? If so, please call Pam Griffin, 509-492-4304, or e-mail her at: pgriff1@earthlink.net.



Did You Know

NEW! "eNARFE" – a virtual chapter for current federal employees/retirees. Go to www.narfe.org.
OPM "PINS" expire if not used in 15 months. "Personal identification numbers" expire if not used within 15 months. For a new number, call: 888-767-6738. A suggestion: use the OPM web site, www.opm.gov, every few months to keep your PIN current.

Tax hotline for retirees. To change federal tax withholdings on monthly annuity payments, call: **800-307-8298**.

NARFE on Facebook. Log onto Facebook, go to "NARFE National Headquarters, then "Like."

Always Good to Know

OPM: 888-767-6738, "Retirement Info Line"

OPM: www.opm.gov/retire/

E-mail questions to: retire@opm.gov

Resource Guide: *Be Prepared for Life's Events* (available at: www.narfe.org)

**NARFE Toll-Free Number: 800-627-3994;
Toll-Free Legislative Hotline: 800-217-8234**

Chapter President – Don Binder

The sun is higher, grass is greener, and trees and flowers are blooming. So, what a perfect time to re-engage as federal employees, retirees or annuitants on our earned benefits.

Many of you know from the April *NARFE* magazine cover story, or NARFE President Joseph Beaudoin's message in the May edition, and/or our Washington Federation President Sandy Cagle's article in the latest *Federation Reporter* (www.narfewa.net), that NARFE is engaged in "a path forward" to help make elected officials and their staffs, and the general public, aware of the contributions the federal family is making each and every day.

Through its **PROTECT America's Heartbeat** campaign, NARFE's goal is to explain how federal employees ensure that our most basic needs as a society are met AND that these same employees have sacrificed to help solve our nation's budgetary 5429 problems.

Yet some partisan politicians are making federal workers scapegoats and are seeking to cut not just our earned retirement and other benefits, but essential services that millions of Americans rely on each day. The smart path forward through these tough economic times will require a strong federal work force. **America's federal employees are part of the solution – not the problem!**

So, it is time for us all to write, call or visit our elected representatives – congressman and senators – to help them understand what impact reducing benefits will have. If you need help, give me a call. Also, see additional information regarding the **PROTECT America's Heartbeat** campaign on page 5, this newsletter. Our joint message goes much further than any single one. Thus, the greater the number of contacts, the more likely we will have a positive impact as Congress debates ways to reduce the federal deficit.

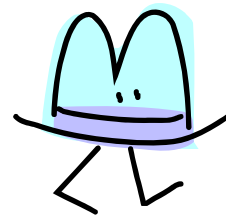


NARFE 2013 Photo Calendar Contest
Entries being accepted until
February 10, 2012.

Entry details at: www.narfe.org.
Questions? Call: 703-838-7760, ext. 268, or
e-mail: pubrel@narfe.org

1st VP/Hospitality Chairman – Carl Gallion

The Kennewick Red Lion, our host for the Chapter's monthly meetings, provides us much more than just a delicious meal – as examples, flags, extra tables, PA system and flexibility when more members show than we had reservations.



Thank you, Kennewick Red Lion!

To help the Chapter and hotel, a few **reminders**:

- "No shows" must pay for their meal unless they cancel their reservation not later than noon Monday prior to the Chapter meeting. To cancel, call Pam Griffin at: 509-492-4304.
 - A "non-dining" table is available for anyone wanting to attend just the meeting and not eat.
 - Vegetarian meals – must be ordered ahead.
- Please contact me if you have questions.

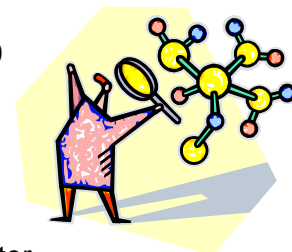
2nd VP/Special Programs – Lorie Bennett

Interested in attending a Dust Devils home game as a chapter? We need 25 members/guests to make this happen. Cost: \$20/per person. This includes a pre-game all-you-can-eat BBQ one hour before the game and chapter recognition during the game. Contact Chapter Secretary Mary Binder if you are interested in attending and/or want more information.



Alzheimer's Research Fund – William Darke

New! Five additional genes have been identified that may contribute to Alzheimer's. This brings to 10 of possibly 100 such genes. To help in Alzheimer's research, NARFE has now raised more than \$9M and is aiming for \$10M by 2012! To date for this fiscal year, Chapter 1192 has contributed \$1,653 – \$608 MORE than last year! ALSO, as of the quarter ending March 31, Chapter 1192 was first in the Washington Federation in donations per member – \$4.52! Let's work to keep our chapter in first place! I accept donations at our monthly meetings, or members can use the form in this newsletter – just complete it and mail it to me along with a check. All the funds will be used for Alzheimer's Research, **and the Chapter gets credit.**



Support Alzheimer's Research Fund

Enclosed is my NARFE Alzheimer's Research contribution of \$_____

Name_____ Chapter 1192

Address_____

City_____ State_____ ZIP_____

Your charitable contribution is tax deductible to the extent allowed by law. You will receive a receipt from the Alzheimer's Association for your contribution. Make your check payable to:

"NARFE – Alzheimer's Research"

Mail to: William Darke
NARFE Chapter 1192 Alzheimer's Chair
210 Somerset Street
Richland, WA 99354-1964

Legislative – Don and Mary Binder

First – we went, we learned and we're still trying to digest all we took in during NARFE's March Legislative Training Workshop. About 300 NARFE members attended with more than half for the first time. Region IX (Washington, Oregon, Idaho, Montana and Alaska) had 22 attendees with 12 from the Washington Federation. We listened to a variety of guest speakers – from elected officials to experts in fields such as healthcare. We attended breakout sessions on another variety of topics. Both the speakers' presentations and the breakout sessions are on NARFE's web site, www.narfe.org.

The number one message – this is the most challenging times ever experienced by those speaking as it relates to Congress, the federal deficit and federal employees!

So, with the recent debates on Capitol Hill and the budget proposals from the President, all of us in NARFE need to reach out to our elected officials to ensure they understand the issues on NARFE's legislative agenda for the 112th Congress. For example, one thing we have done is send notes through the **PROTECT America's Heartbeat** campaign that guarantees letters go to our two senators and our representative.

Additionally, we continue to work to meet with senior staff for our three congressional members. April 22 – Don and 1st VP Carl met with Ms. Barb Lisk, Congressman "Doc" Hastings' district director. They discussed NARFE's legislative issues. Ms. Lisk assured them the congressman would hear from her first-hand about NARFE and our Chapter. We'll keep you posted as we meet with the congressman or Ms. Lisk, and Senators Murray and Cantwell, or their senior staff.

As always, we recommend checking NARFE's web site, www.narfe.org, to get updates. If you don't have access to the Internet, want to discuss legislative issues of interest to you, or have other questions, feel free to contact 9326 either of us at: 509-585-1393, or e-mail, don_binder@msn.com or mary_binder@msn.com. Finally, contacting our elected officials remains important in making your voice heard! Contact information follows.

Contacting our Federal Legislators

The Honorable Richard (Doc) Hastings, U.S. House of Representatives

Phone: 202-225-5816; Fax: 202-225-3251
<http://hastings.house.gov/ContactForm.aspx>
2715 Saint Andrews Loop, Suite D
Pasco, WA 99301
Phone: 509-543-9396; Fax: 509-546-1972

The Honorable Patty Murray, U.S. Senate

Phone: 202-224-2621; Fax: 202-224-0514
<http://murray.senate.gov/email/index.cfm>
402 East Yakima Avenue, Suite 390
Yakima, WA 98901
Phone: 509-453-7462; Fax: 509-453-7731

The Honorable Maria Cantwell, U.S. Senate

Phone: 202-224-3411; Fax: 202-228-0514
<http://cantwell.senate.gov/contact/index.dfm>
825 Jadwin Avenue, Suites 204/204A
Richland, WA 99352
Phone: 509-946-8106; fax: 509-946-6937

District V Vice President – Steve Anderson

Between preparing for our combined District I and V workshop, and the Federation convention, it has been a busy time. A special thank you to all involved with the workshop – whether behind the scenes, doing presentations, and/or by attending! With more than 60 attending, success!

Sunshine News – Marci Lingle

Condolences – to Dolores Rizzo on the passing of Chapter member Deacon Al Rizzo; and to the families of members: Josephine Bushnell; Eunice Debban; Russell Gilbertson; and, John Hemperly. Condolences also to: Pat Alford (husband passed); Sandi Smith (mother passed); Nancy/Gene Schreckhise (Gene's mother passed); Verneice Skinner (brother passed). Thoughts are with them and their families.



Special Get Well Thoughts/Wishes To –
Sue Avery, Johanna Caylor and Larry Williams.

Please let me know about members affected by a significant event such as an illness, loss, or an extra-special occasion. Contact me at:

tclingles@clearwire.net or 509-627-6628.

(Note: During May/June, contact Mary Goldie at: whitegold@charter.net or 509-582-8757.)

Thoughts from Afar



**On March 11, Chapter 1192's
Deacon Al Rizzo passed away.**

*Al served the Chapter in various capacities
for many years, including deacon. His
stories and words of wisdom have been
important closings to many Chapter
meetings.*

*To honor his memory and to continue
providing members his special insights,
Chapter newsletters will have a
“Thoughts from Afar” message,
with help from Al's wife, Dolores.*

For this newsletter:

**“Even a mouse can eat an elephant,
one bite at a time. So, smile and be happy.”**

Public Relations – Mary Binder

In September, the Chapter will celebrate its official 40th birthday! To prepare – and help maintain the Chapter's history – we need photos, old newsletters and/or other items. Have anything tucked away? If so, please contact me at: mary_binder@msn.com, or 509-585-1393.

NARFE-PAC – Carl Gallion

Congratulations, and thank you, Chapter 1192 PAC contributors! During the period January – March, chapter members contributed \$420 – more than any other Washington chapter AND an excellent start to surpassing the \$1,976 amount donated for the 2009-2010 Congress.



These dollars help open congressional doors – important in gaining support for NARFE's agenda. Such dollars and support will grow even more critical as fiscal battles continue and challenges to benefits – both for current employees and retirees.

So, ALL donations, no matter the amount, are welcomed; and, for those of at least \$20, I have PAC pins for the 2011-2012 Congress.

Webmaster – Larry Williams

Missed a chapter meeting and want to know what happened? Or, what about an upcoming meeting program and meal selection? The Chapter's web site, www.narfe1192.org, has answers to these questions and other NARFE information.



The web site is a work in progress – that is, it is frequently updated. Whether adding the latest Chapter newsletter, meeting or board minutes, or the latest alert from NARFE, the site has useful information for Chapter members, or 9540 for prospective NARFE and Chapter members.

If you've never checked out the site, or if it's been awhile, please take a few minutes to have a look. If you need help, have questions, or have ideas for other information for the site, contact me at: leapinlar@yahoo.com, or 509-783-8554.

NARFE's GEMS – Global Electronic Messaging System – has been modified! Here is another, and now even better, way to stay current with what is happening with NARFE, Congress, legislation and/or many other things.

According to NARFE, GEMS now allows members to choose the type of e-mail traffic they wish to receive: (1) Priority Legislative/Member Benefits News; (2) Federation/Local News; or, (3) Both. To sign up for GEMS, go to: www.narfe.info/gems/. For those on GEMS, log in with your e-mail address and password.



PROTECT *America's Heartbeat*

From NARFE – Action Alert!

America's federal employees protect this country's heartbeat – but they're under attack.

Federal employees ensure our food is safe and our air is healthy. Some spend their days fighting the spread of infectious disease, while others raise the alarm whenever a storm is coming.

We depend on federal workers in all 50 states to keep America strong. And they've already sacrificed pay and benefits to help solve our nation's budget woes, even though they didn't cause our economic crisis.

Yet politicians are trying to turn federal employees into scapegoats and are pushing for hurtful cuts to health benefits, retirement annuities and services we rely on every day. It's not right – and we need to speak out now.

What can you do? Here are a few ideas:

- Check out the campaign's web site: www.ProtectAmericasHeartbeat.org.
- Learn more about the campaign in the April NARFE magazine!
- Share this campaign on your Facebook page, through e-mail, through phone calls and/or through face-to-face contacts with family/friends.
- Write and tell your senators and representative: **"Federal workers protect America's heartbeat. Reject additional cuts to their pay and benefits."** You can use the NARFE-prepared letter at the campaign's web site to send the letter electronically.
- Don't use a computer? Contact Chapter Secretary Mary Binder, 509-585-1393, for a copy of the NARFE-prepared letter that you can use.



Did You Know – Campaign Talking Points

- Nearly 1 in 100 Americans is a federal employee – they are your friends, next door neighbors.
- There are about 3.5 million full/part-time federal employees.
- There are about 1.2 million retired federal employees.
- 55% of federal employees are between ages 45 and 64 vs. 36% in the private sector.
- 44.3% of federal employees have college degrees or higher education vs. 29% in the private sector.
- 62% of federal employees earn between \$25,000 and \$75,000 annually.
- 1969: 3 million federal employees served 203 million Americans; 2009: 2.8 million served 307 million.
- 84.3% of federal employees work outside the D.C. metro area – that's 2,392,742 across the country.
- Washington State –
population: 6,664,195;
federal employees: 57,894;
federal retirees/ annuitants: 64,965.



From WSFC President Sandy Cagle

Washington State is fortunate to have support from most of our congressional members on our issues. However, we must constantly carry the message to them that:

"Federal employees have done and continue to do real work, adding real value to real peoples' lives.

We are willing to make fair sacrifices, but don't unfairly single us out to solve the deficit."

It is hoped that this threat and this campaign will revitalize current members and attract new members to NARFE. We simply cannot afford **not** to recruit younger people into joining NARFE.

National Active and Retired Federal Employees
Johanna Caylor
514 Stagecoach Ct
Richland, WA 99354
E-mail: caylorx2@aol.com

Non-Profit Organization
U.S. Postage
PAID
Permit No. 173
Richland, WA

Return Service Requested



Since 1985, a nationwide public education campaign honoring the men and women serving our nation as federal, state, county and local government employees, and ensuring our government is the best in the world.

Membership – Johanna Caylor

Hello: To Chapter 1192 from Sandy Keating, now living near family in Oak Harbor, Wash.

Welcome: Leon Bennett, Thomas Perry, Faye Vlieger

Reinstated: Joe Escamillo

Renewals: New! NARFE is now e-mailing renewal notices to those who have provided e-mail addresses to NARFE. Watch for details in the *NARFE* magazine, and updates at our meetings. However, if you have questions or need help with your membership, call me.

Remember: The WSFC Federation provides \$10 rebates for: **1-Dues withholding; and, 2-Spouse sign up. (NOTE: Only retirees are eligible for dues withholding. Send no money when applying; only \$3.67 withheld monthly from your annuity. NO more renewal notices!)** NARFE provides an \$8 rebate for new “AFE” memberships – active federal employees.

**Federal
Long-Term Care Insurance Program
Open Season for Current Employees
April 4 thru June 24
Go to: www.ltcfeds.com/.**

Reminder: Please, notify the Chapter and NARFE if you change your mailing, e-mail, or other contact information – this applies to “**Snowbirds**,” too!

Call or e-mail me: 509-375-0739 or 509-308-6664; or, caylorx2@aol.com.

Hidden numbers: 3 in this issue – last 4 digits of a member’s number! Contact me if you find yours; win \$5! March/April newsletter numbers belonged to: **Mort Carrothers;**

**Terry Hastings; and,
Robert Rosselli.**

No calls so no winners, sorry!



Upcoming Dates to Remember:

**Public Service Recognition Week,
May 1-7**

Mother’s Day, May 8

Armed Forces Day, May 21

Memorial Day, May 30

Flag Day, June 14

Father’s Day, June 19

Summer Begins, June 21

