



September: annual call to ALL chapter members to update contact info!

TRI-CITIES CHAPTER 1192

NARFE NEWS

National Active and Retired Federal Employees Association
"Advocates for Current and Former Federal Employees"

NARFE: www.narfe.org Washington Federation: www.narfewa.net Tri-Cities: www.narfe1192.org

2014 Chapter 1192 Officers & Board Members

President, Don Binder	509.585.1393
1st Vice President, Lorie Bennett	509.531.2745
2nd Vice President, Larry Williams	509.783.8554
Secretary, Mary Alice Binder	509.585.1393
Treasurer, Nancy Crosby	509.735.3288
Director at Large, Steve Howes	509.851.4913
Director at Large, Pat Turner	509.586.6239
Alzheimer's, Bill Darke	509.375.7757
Legislative, Don & Mary Alice Binder	509.585.1393
Membership, Johanna Caylor	509.308.6664
Newsletter, Mary Alice Binder	509.585.1393
NARFE-PAC, Steve Howes	509.851.4913
Public Relations, Mary Alice Binder	509.585.1393
Service Center, Lorie Bennett	509.531.2745
Webmaster, Larry Williams	509.783.8554

Chapter Email: narfe1192@gmail.com

CHAPTER MEETINGS/EVENTS

Meetings: 1st Wednesdays, except July/August

11:30 a.m., Kennewick Red Lion, Ballroom D

Lunch: \$15; reservations REQUIRED

(Vegetarian plates available, if ordered ahead)

Lunch not required to attend the meeting.

Need a ride? Contact President Don Binder!

Note: Executive Board meeting days/times vary.

September 3 – Tim Coleman, elder law attorney: targeted information for seniors and their families

(Note: also, brief NARFE convention recap)

Menu: cheddar chive chicken w/wild rice

October 1 – (Tentative) 4th Congressional District candidates or their representatives

Menu: Swedish meatballs over pasta

JULY TREASURER'S REPORT*

Balance forward, June 30	\$10,390.88
July income	\$ 225.01
July expenditures	\$ 434.92
Dedicated funds thru July 31	\$ 1,755.00
Balance on hand, July 31	\$ 8,425.07

(*Full reports are posted monthly on the Chapter web site.)

September – October, Volume 2014, Issue 5

Chapter President – Don Binder

When you receive this newsletter, chapter members Nancy Crosby, Johanna Caylor, Sig Preston, Mary Binder and I will either be in Orlando, Fla., or heading that way for the 33rd NARFE National Convention, August 24-28. Therefore, we wanted to ensure this newsletter was finalized and sent before the convention.

We will attend workshops on membership, branding and NARFE-PAC. We'll have general sessions on "Future NARFE," which I wrote about in the last newsletter, and other topics of interest to members. The agenda is on NARFE's website, www.narfe.org.

We will use electronic ballots to vote for elected positions with more than one candidate and on several issues. Our chapter has 6 votes, based on our membership, and as the chapter president, I will actually cast the votes. The chapter executive board met August 1 and agreed on how we would cast those particular votes.



No matter the voting results, we will have a new NARFE national president and treasurer. Once votes have been counted on a proposed bylaw change to eliminate the offices of vice president and secretary, we will know if they will also need to be filled. If the delegates agree to eliminate those positions, no further action will be required. However, if that change does not gain a majority of votes, there will be nominations from the floor for those 2 positions.

So, between having new national officers and, most likely, adopting the resolution to move forward with a strategic plan for the *Future of NARFE* report, there will be significant changes to NARFE, some of which will be voted on at the 2016 national convention in Reno, Nev.

NARFE will post convention "daily reports" on its web-site starting Monday, August 25. The reports will also be

(Continued on page 2)

(Continued from page 1)

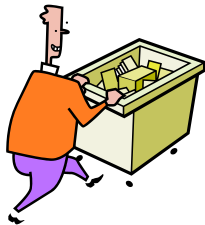
on the federation website, www.narfewa.net. Check either website to stay current. If you have issues you want considered by your delegates or a large group, feel free to email me at: don_binder@msn.com, or call my cell at: **509.378.1013**.

Enjoy the remaining days of summer. Hopefully, we've seen the end of 100-degree-plus days! I look forward to seeing as many of you as possible September 3, Columbia Center Red Lion Hotel, Kennewick, as we once again resume our monthly meetings.



1st VP/Service Office – Lorie Bennett

The Richland post office on Jadwin Avenue next to the Federal Building is closing after business hours Saturday, August 23, and re-opening at its new Richland location just a few blocks west, 639 Cullum Avenue, Monday, August 25. This move will not affect our Service Office, which will remain in the Federal Building. Service Office hours are Tuesdays, 9:30 to 11:30 a.m. Visitors are welcome! **2749**



2nd VP/Webmaster – Larry Williams

New meeting year means new updates on our chapter website, www.narfe1192.org. Forgot a meeting date? Want to know what the menu is for lunch? What about the meeting's featured program? Or, want to read meeting minutes? Find this information and more on our chapter website!

Director at Large – Steve Howes

On the morning of the Fourth of July, I retrieved my *Tri-City Herald* from the driveway and, as usual turned immediately – well, immediately after perusing the sports section – to the editorial page. There, I found an interesting column with a 25-question, “test-your-knowledge” quiz from the study list given to U.S. immigrants seeking citizenship. As you would expect, the questions dealt with U.S. history, the basis and operation of government, and the responsibilities of American citizenship. I took the quiz and was generally pleased with my score. I should have scored well as I have been a citizen of this country for nearly 67 years! However, at times even I have difficulty understanding how our democracy works. I have a great deal of empathy for



those new to our country who, as they try to become good Americans, must answer these questions orally as they are posed to them by citizenship test administrators in an unfamiliar language.

One question, in particular, attracted my attention: *What are two ways Americans can participate in their democracy? (Can you name more than two?)* The answer given was: *Join a political party, help with a campaign, join a civic group, join a community group, give an elected official your opinion on an issue, call senators and representatives, publicly support or oppose an issue or policy, run for public office, write to a newspaper.*



If you look at the answer closely, it is apparent that a number of these activities are precisely those that NARFE national president, Joseph Beaudoin, is encouraging. In his column in the July *narfe* magazine, he encourages our members to become more involved. In particular, he promotes an active dialog between NARFE members and their congressional delegation, and says the summer recess is one of the best times to do this. I know I have been remiss in this area and need to be more diligent. How have you been doing?

On July 9, I attended a League of Women Voters-sponsored forum at Columbia Basin College featuring the 12 persons who were running for Rep. Doc Hastings' 4th Congressional District seat. This was a first for me, and I found it very interesting and informative. I could put a face with a name on a campaign sign; and, I had an insight into each candidates' politics. While specific mention of issues affecting federal employees and retirees did not occur, I felt confident I could make an informed decision when I cast my vote in the primary. Now, we will learn more about the top 2 candidates' positions on issues of interest to NARFE as we move closer to the general election.



Remember, one can be an **active** participant in our democracy without being a member of NARFE. However, it is apparent to me that being **active** in NARFE is an excellent means of participating and carrying out one's responsibilities as an American citizen. NARFE membership also provides an added benefit – being part of a large group with similar issues and interests. It helps to make our collective voice even louder.



Like most members, I enjoy our chapter meetings. I look forward to the fellowship, food and excellent programs. However, in large part, it is what we do outside of meetings that contributes to achieving NARFE's mission.

District V Vice President – Nancy Crosby

At our September chapter meeting, we will share results of actions from the August national convention, including the “Future of NARFE.” We’ll also talk about a spring district workshop with the other District V chapters – Yakima and Walla Walla.

An agenda item for the spring workshop is our 2016 Washington federation convention, which our District V is hosting in the Tri-Cities at the Three Rivers Convention Center and SpringHill Suites hotel. We need to start organizing committees and work on a theme. Yes, we need ideas and many helping hands!



Our chapter has again been invited to the Wenatchee chapter’s annual picnic, Wednesday, September 10, 11:30 a.m., Rocky Reach Dam park off Highway 97A. The Wenatchee chapter has invited state legislators to attend and the picnic is the chapter’s annual NARFE Alzheimer’s Research Fund raffle. It is always a fun time and a great way to meet fellow members.



Legislative – Don and Mary Binder

We have invited the “top 2” candidates from the August primary for our 4th Congressional District seat, Clint Didier and Dan Newhouse, to our October 1 chapter meeting. Why?

An educated electorate is the key to informed decisions. As the vast majority of our chapter members live in the 4th Congressional District, we believe hearing from these new congressional candidates for the seat 10-term Rep. Doc Hastings is vacating is key in our decision-making process, even though our members will get information from other sources. At press time, neither candidate has confirmed. We’ll keep you posted.

The 2014 Wounded Warriors Federal Leave Act has been introduced in the House. It would have a positive impact on present federal employees as it would give former military members injured during combat access to their full year’s sick leave immediately upon starting their federal jobs. Currently, vets, and new feds, enter civil service with no sick leave and accumulate it over each pay period. This bill would instead enable disabled



Contacting our Federal Legislators

The Honorable Richard (Doc) Hastings, U.S. House of Representatives

Phone: 202.225.5816; Fax: 202.225.3251

<http://hastings.house.gov/ContactForm.aspx>

2715 Saint Andrews Loop, Suite D, Pasco, WA 99301

Phone: 509.543.9396; Fax: 509.546.1972

The Honorable Patty Murray, U.S. Senate

Phone: 202.224.2621; Fax: 202.224.0514

<http://murray.senate.gov/email/index.cfm>

402 East Yakima Ave., Suite 390, Yakima, WA 98901

Phone: 509.453.7462; Fax: 509.453.7731

The Honorable Maria Cantwell, U.S. Senate

Phone: 202.224.3411; Fax: 202.228.0514

<http://cantwell.senate.gov/contact/index.dfm>

825 Jadwin Ave., Stes 204/204A, Richland, WA 99352

Phone: 509.946.8106; Fax: 509.946.6937

veterans to take up front all 104 hours of sick leave they would eventually compile over a full year.

President Obama proposed a 1% pay raise for federal employees in his 2015 budget proposal. If Congress does not prohibit a raise, the 1% raise would become effective by default in January. **4863**



With Congress in recess until after Labor Day and again for the month of October, we do not anticipate much action on retiree issues until after the November general election. However, we remain vigilant to any proposals that could negatively impact on our earned benefits.

Alzheimer’s Research – William Darke

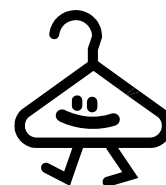
NARFE continues to march toward its \$11 million cumulative goal for Alzheimer’s research by the end of 2014. As of June 30, NARFE had raised \$10,939,669. The goal could be reached at the August national convention. Watch for updates in the daily convention summaries!

There are currently more than 5 million Americans living with Alzheimer’s. About two thirds of these are women. It is important that we continue our efforts to find a cure. Thanks to all who have contributed.



Public Relations – Mary Binder

A chapter fundraising opportunity for NARFE Alzheimer’s research – staffing the coat-check room, Saturday, November 15, at the 36th Tri-Cities Wine Festival, 6:30 to 10 p.m. This will also be an opportunity to provide more visibility for our chapter and NARFE! A sign-up sheet for shifts will be at chapter meetings; but, feel free to contact me with questions and/or to sign up!



NARFE-PAC – Steve Howes

The mainstream media seem to enjoy running stories that perpetuate the stereotypical image of federal employees as inefficient, over-paid, uncaring, and not to be trusted with taxpayer dollars. Yes, the federal government is a large organization, so there are bound to be a few “bad apples” who can often taint the image of the remainder of the workforce.



However, those of us who have spent our careers in government service know most federal employees are dependable, hard-working and contributing members of their communities. Very seldom do we hear or read stories of their contributions to charitable organizations, sick-leave donations, time away from families, donations of time, or help in management of disaster-relief situations.

Last year, there was much public outcry regarding training programs being conducted by the IRS and approved by its upper-level management staff. At the time, my wife and I wondered what government they were working for as we would never have gotten away with that sort of thing in our agency.

Now, currently, the situation at the Department of Veterans Affairs has taken center stage with the department receiving vehement – and apparently well-deserved – criticism for its poor delivery of healthcare and the bonuses given to seemingly poor performers. I believe we all want this problem resolved quickly and hope that our veterans will be cared for in a timely and caring manner in the future.



These scandals, along with other apparent past agency gaffes, only make passing legislation benefitting federal employees and protecting their rights even more difficult. As we are all well aware, wages and benefits for current federal employees and annuities for retirees are convenient targets for legislators as they grapple with our country's economic problems. When times are tough, the electorate is often reluctant to support issues important to the federal workforce and retirees when their own situations seem bleak in comparison.

My point here is this – the November mid-term elections are fast approaching. It is critical that NARFE-PAC identify and provide financial contributions to candidates



across the country who support issues important to federal workers and retirees. Believe me, we need all the support we can get. Federation chapter legislative chairpersons have been communicating with local candidates and/or their staffs. As an example, note the invitation to attend our chapter's October meeting (referenced in Don and Mary Binder's legislative article, page 3) to the “top 2” candidates for our state's 4th U.S.

Congressional District seat, Clint Didier and Dan Newhouse. For more information about each candidate, here are their websites:

Clint Didier: www.didier4congress.org;

Dan Newhouse: www.dannewhouse.com.



As this election season continues to move forward, NARFE expects to receive requests for NARFE-PAC funds from candidates across the country. Our Tri-Cities Chapter 1192 contributions to NARFE-PAC slowed to a near standstill at our June meeting with only \$13. Now is not the time to slack off on making contributions to NARFE-PAC. Remember, accomplishing NARFE's stated mission is highly dependent on your continued financial support to NARFE-PAC.

Each *narfe* magazine has information about contributing to NARFE-PAC, including the monthly “sustainer program,” and a donation coupon; but, for your convenience, there is a coupon below, too! Further, the NARFE website has NARFE-PAC information, and I'm available at chapter meetings to take donations and talk with you further about NARFE-PAC. Also, feel free to call me.

Finally, a reminder from NARFE, “Only NARFE members may contribute to NARFE-PAC. NARFE will neither favor nor disadvantage anyone based on the amount of a contribution or the failure to make a voluntary contribution to this political action fund. NARFE-PAC contributions are not deductible for federal income tax purposes.”

NARFE-PAC Contribution Form

Enclosed is my NARFE-PAC contribution: \$ _____

(Note: Federal law requires political committees to report the name, mailing address, occupation and name of employer for each individual whose contributions aggregate in excess of \$200 in a calendar year.)

☐ Cash ☐ Check ☐ Credit Card

Card Type: ☐ MasterCard ☐ VISA — Discover ☐ AMEX

Card #: _____

Expiration Date: _____

Name on card (print): _____

Signature: _____

Mr. Mrs. Miss Ms. (please circle)

Name: _____

Address: _____

NARFE Membership #: _____

For my contribution of \$20/more, please send a NARFE-PAC pin:

Please check ☐ Yes or ☐ No

Mail coupon/payment to: NARFE, ATTN: NARFE-PAC, 606 North Washington Street, Alexandria, VA 22314

Caller Coordinator – Pam Griffin

Another reminder! For the September chapter meeting, our callers will be making their annual calls to ALL members to update our master calling list information. We want to ensure we have correct contact information and review whether or not a member wants to remain on the “do-not-call list” for monthly meetings.



So, when callers leave you a message, please return the call. Besides verifying the contact information in September, the callers will also need meeting lunch counts. Thanks!

Last but not least, if you have time to make a few calls during our meeting season, September to June, please let me know. The more callers we have, the less time each needs to spend making calls. My contact information: **Ph: 509.492.4304;** **email: pgriff1@earthlink.net.**

Membership – Johanna Caylor

Welcome new members: Cindy Anderson;* Gloria Garcia;* Clarence Haley; Sylvia Hecker, Sue McDonald; Martin Smith;* Vickie Spitz;* Mike Talbott; Paul Turner; Lavera Wade; and, Patty Wehrli* (* are AFEs).

Welcome back: Kathy Miskho; Frances Reese; Gail Splett; Yvonne Wilde.

Dues Withholding: Sylvia Hecker.

Retirees! Newer and older retirees – please consider dues withholding and **SAVE**. Dues withholding is the way to go PLUS you will receive a one-time \$15 combined rebate from our Washington State Federation of Chapters and our Tri-Cities Chapter 1192. Contact me if you need information and/or the withholding form. You send NO MONEY with the application; then, within 6-9 weeks, OPM will notify you that \$3.67/monthly will be taken from your annuity. No more renewal notices. Painless! **8318**

Hidden Numbers: The July/August newsletter hidden numbers belonged to: James Daily; Judy Hames; Anne Ross. No calls, no winners! Find 3 new numbers “hidden” in both the printed and electronic newsletter – **the last 4 digits of a member’s number**. Contact me and win \$5!

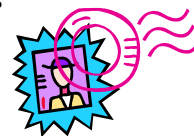


September special recruitment incentives: On the heels of NARFE President Joseph Beaudoin’s July 10 call for chapter and federation recruitment support, NARFE is offering a special incentive for September to jump start the effort. While many of our members are ongoing recruiters, we encourage greater participation and remind those who may have felt some reluctance that material and guidance are available.

Certainly, we all would like to increase the number of NARFE members and build our collective voice. Many already work hard to do just that, regardless of any incentives. But, let’s make September count! Let’s build that voice just as Congress resumes session!

The incentives:

- Recruiters will receive \$10 for each new member, current employee or retired, who joins in September. Applications must be postmarked by September 30; calls or website joins must be received by September 30.
- All September recruiters will be entered into a random drawing for a Kindle Fire, once for each new member they have recruited.



Further information about this recruiting initiative is on the NARFE website.

2015 FEHBP Open Season: It is coming SOONER than LATER – **November 10 to December 8**. The schedule for the FEHBP providers in our area is:

- Tuesday, October 14, 4 to 5 p.m., DHS-TSA, Tri-Cities Regional Airport;
- Wednesday, October 15, 8 to 9 a.m., Social Security Administration office, Kennewick;
- Wednesday, October 15, 10 to 11:30 a.m., Federal Building, Department of Energy, Richland;
- Wednesday, October 15, 1:30 to 3 p.m., Stevens Center, Department of Energy, Richland.

Note: If this schedule changes, we will post it on our chapter website, www.narfe1192.org, and make announcements at chapter meetings. Or, if you want to verify the schedule, call me the week prior to the above dates at: 509.375.0739.

**Email addresses help save the chapter money!
Do we have yours?**

Email addresses needed! Having a member’s email address saves the chapter money.

They are only used for NARFE chapter business, NEVER sold or given to any other organization or individuals. Please notify Nancy Crosby at: ncrosby2b@charter.net. Thank you!





Return Service Requested

NARFE

Washington Federation of Chapters
Tri-Cities Chapter 1192
2802 W. 40th Ave.
Kennewick, WA 99337-2666

21st Annual
ALL SENIOR PICNIC
Thursday, September 18
11:00 a.m. to 2:00 p.m.
Howard Amon Park, Richland
(behind Richland Community Center)

Cost:
\$7/advance
\$10/at the event



Sunshine News – Mary Binder

Condolences to: WSFC Service Officer
Charlie Caughlan on the passing of his wife;
to the families of members
Marian Shaw and
Elizabeth Howe.

Get well cards/thinking of you cards to:

WSFC Finance Chairman
Mike Ferri and to chapter
member Norm Ravely.

Please let me know about: those
needing some “sunshine” or, even a card for
a special occasion! Call, or email me:
mary_binder@msn.com.



Websites of Interest

federalnewsradio.com — Mike Causey column
fedsmith.com — daily TSP values, after 5 p.m.
federalsoup.com — scroll to topic of choice
federaltimes.com — finance and legal matters
govexec.com — pay and benefits by T. Flanagan
(Courtesy of NARFE Seattle Chapter 43)
<http://claimyourcash.org> — Washington State
listing for at least \$25 unclaimed property

PROTECT America's Heartbeat Toolkit!
Updated/Expanded! Go to: www.narfe.org.

REMINDERS!

Chapter 1192 Service Office

Open Tuesdays, 9:30 – 11:30 a.m.
Federal Bldg., Room 137, Richland
Phone: 509.373.9536

Coordinator: 1st VP Lorie Bennett,
Email: loriebennett4310@gmail.com

NARFE on Twitter! Follow at: @narfehq

Facebook: Log onto Facebook, go to
“NARFE National Headquarters,” then “Like”

NARFE Toll-Free Number: 800.627.3994

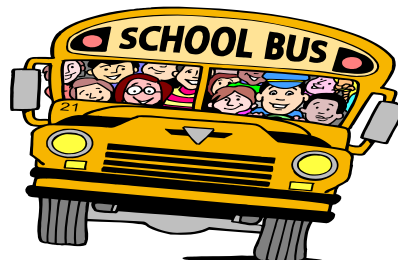
Toll-Free Legislative Hotline: 877.217.8234

OPM: 888.767.6738, “Retirement Info Line;”

www.opm.gov/retire/ or retire@opm.gov

New School Year!

Help keep our children safe



Be patient, drive safely!